

Community Services and Transportation in the United States

Different communities in the United States offer different kinds of services and different forms of transportation. Find out what is available in your community and make use of it! Public transportation is usually much cheaper than personal cars or taxis.

Different service providers may work with your resettlement agency to provide assistance during the resettlement process in a variety of areas, such as case management, English language programs, and employment services. These other service providers could be private, governmental, or non-governmental.

Community Services



Fire Department

A community service you call in case of a fire or similar emergency.



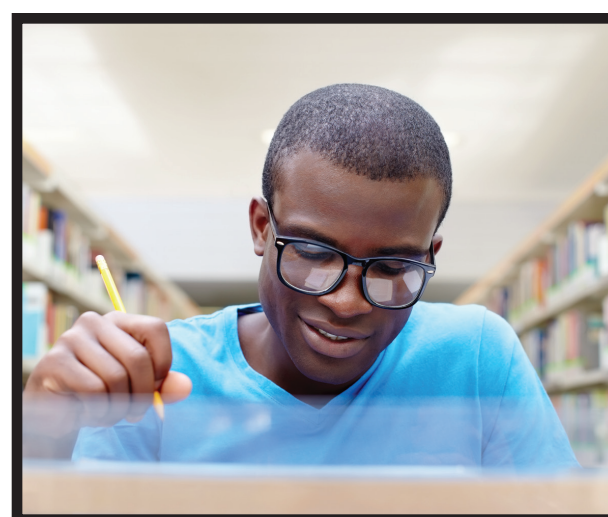
Post Office

This is where you go to mail a letter or packages or buy stamps.



Hospital or Health Clinic

A place where you go if you are having difficulties with your health.



Public Library

A building that holds a collection of books available to residents to borrow free of charge, and often offers classes such as English or typing.

charge, and often offers classes such as English or typing.



Park

A place open to the public for outdoor activities such as walking, running, playing games, or sitting and relaxing.



Police Department

This department is responsible for helping citizens maintain a safe community.



Government Assistance

Places such as the welfare office or the Department of Motor Vehicles (DMV) process documents for those seeking assistance with things such as food stamps or driver's licenses.

those seeking assistance with things such as food stamps or driver's licenses.



Recreation or Community Center

A place where people can gather to play sports or participate in other activities in a safe environment.



Schools

Education levels in the U.S. are elementary, middle, and high school, which are free to children 5-18 and mandatory for children ages 6-16. Places of higher education include community colleges, universities, vocational, and technical schools.

children ages 6-16. Places of higher education include community colleges, universities, vocational, and technical schools.

Public Transportation



Buses



Trains



Subway Systems



Biking



Walking



Ferries